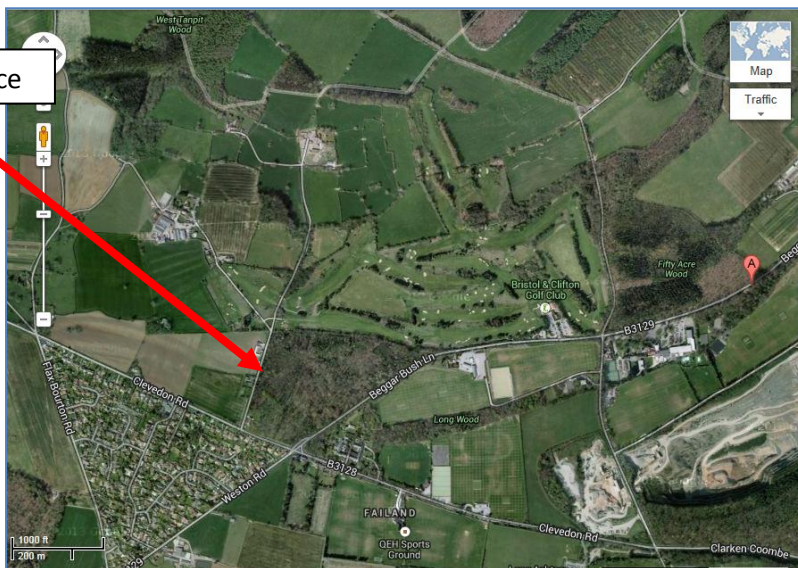


# WildForesters

Adventurous | Educational | Experiences

## Base and surroundings

Wild Foresters are based in a lovely North Somerset woodland called WRAXALL PIECE. Set 5 miles South Westerly outside of Bristol City Centre, we feel Wraxall Piece has all the ideal components for a successful Forest School. It contains a variety of trees, from Hazel to conifers, along with woodpecker and dormouse conservation projects being set up by the University of Bristol. It is a small public woodland with a large car parking area near the entrance.



The Forestry Commission own the woodland and have given us written permission to use the area for the use as a Forest School.

### Overuse of the woodland area

To minimise overuse of the area, we have drawn up a timetable of when the main areas will be used by local schools and businesses. This will enable all parties involved to share the natural resources needed in the woodland. We aim to help the Forestry commission to thin out the coppice areas and to allow small saplings to grow.

### Woodland Environment

All children and adults will be expected to respect their environment and to not damage trees or natural habitats. Wild Forester's expect the highest of respect for the forest as this is our workplace and we need to keep it in good condition for the future of the school.

### Inclement Weather

In poor weather conditions we will have to cancel sessions. Normally this will be due to high winds. We will post information on our website and try to contact the school/parents if we do have to cancel.